

Lyon & Healy

Chicago

George Washburn Lyon: 1825-1894; born in Massachusetts and worked for Oliver Ditson in Boston before being chosen to start the dealership in Chicago; retired in 1889 and bought out by Healy (top photo)

Patrick Joseph Healy: 1840-1905; born in Burnfort, Ireland; emigrated to Boston in 1850; worked as clerk for Ditson before being chosen to start the dealership in Chicago; errand boy for Ditson in 1854 (2nd photo)

James E. Healy: 1866-1946; son of PJ born in Chicago; with L&H c.1885-c.1905; moved to Europe (photo 3, 1919)

Paul J. Healy: 1867-1924; son of PJ; pres. of L&H 1911-1915

Marquette A. Healy: 1883-1953; son of PJ; Vice-president & GM of L&H by 1916; President 1921-1925

Columbus Healy: 1891-1946; son of PJ; from clerk in 1910 to VP & GM by 1917; left before 1930 (photo 1 next page)

1864 Lyon & Healy opens in September at #104 S. Clark St.

1867 Now at #116 Washington St (corner of Clark, same bldg.).

1870 Move to #96-100 Wabash Ave; fire destroys store in Sept.

1870 Move to #150 S. Clark St. after fire.

1871 Store destroyed in great Chicago fire; some records saved; temporary stores at #287 W. Madison St. then Wabash Ave. church at corner of 16th St.

1872 New store at #162 State St. in October.

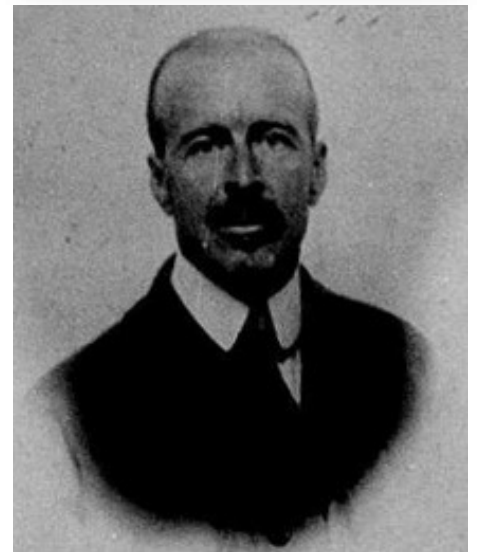
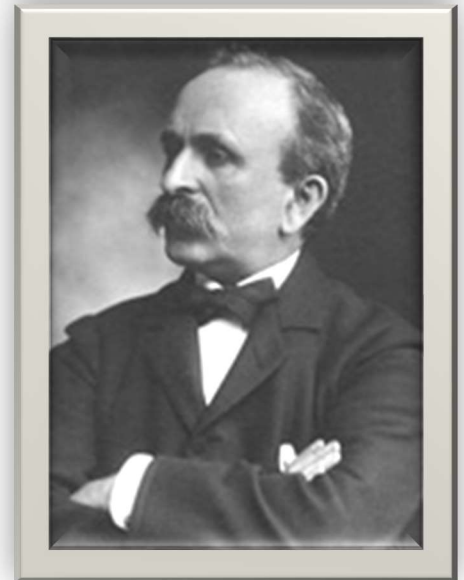
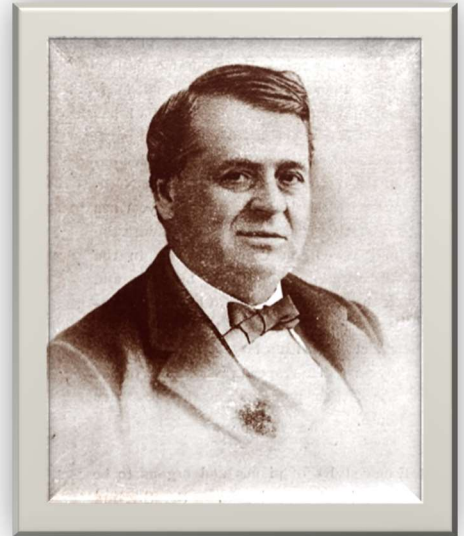
1876 Music dealer Julius Bauer is also listed at #162 State St.

1878 Catalog has rotary and piston-valved instruments with some PV made in Paris by un-named maker.

1880 Now selling high-quality French made Henry Gunckel instruments as well as mid-quality by F. Jaubert & Co. of which L&H recently secured all US sales.

1892 Store at #156-162 State St.; PJ Healy, pres; Charles Post, vp; R. B. Gregory, tres; J. E. Healy, assistant tres; J.P. Byrne, sec; factory at W. Randolph & Bryan St (dir).

1894 Store moves to Wabash Ave. Catalog shows that they are selling high-quality Higham instruments from England,



French Jaubert & Co., German piston valve economy models, and a new model of French made Beau Ideal brass which is second only to Higham in cost. They also list the "Solo Cornet" as an important addition.

- 1896 Establishes "Own Make" brand of instruments.
- 1897 Brass instrument models from lowest to highest quality were German pistons, L&H Silver Piston, F. Jaubert, French piston, Beau Ideal, & Higham.
- 1900 Store at #199-205 Wabash Ave. James Healy is no longer the assistant treasurer; factory at same location.
- 1901 Catalog shows brass instrument models from lowest to highest quality as Silver Piston, Champion (European), Beau Ideal (French), F. Jaubert, Solo Cornet, Own Make, and Duplex Own Make.
- 1905 Patrick Healy dies. John Haynes (instrument maker for Ditson) is one of the pallbearers. Production begins on the Own Make Duplex cornet; Solo trumpet is a great success.
- 1910 R.B. Gregory is pres; J.F. Bowers, vp; #199 Wabash Ave; factory at #1420 W. Randolph.
- 1912 Catalog shows brass models from lowest to highest cost as Champion Silver Piston, F. Jaubert, Beau Ideal, American Professional, American make Solo, American make Duplex
- 1914 New factory at #4100 Fullerton Ave.
- 1916 New store at #243 S. Wabash Ave opens in May. Robert Gregory, pres; James Bowers, sec.
- 1919 Ad says that they are manufacturers of band insts & bugles
- 1923 M.A. Healy, pres; Columbus Healy, vp; C. R. Fuller, sec-tres; branch stores at 1018 E. 63rd St & 4648 Sheridan Rd.
- 1924 They buy the E. A. Couturier instrument company in LaPorte, Indiana (*MTR*).
- 1925 New president Durham ends all instrument production in Chicago except harps. [See below for added information.]
- 1926 First of the new Jazz trumpets are being sold and are the latest in a line of conical bore instruments. Very small bore and a short valve action, said to have perfect intonation. (*MTR*, June 10) [photo 5 is rare example, Couturier made]
- 1927 Brass made at Chicago & LaPorte. F.L. Lemm is super. for both plants; C.H. DeAcres vp & gm (*MTR*).
- 1928 United Band Instrument Co is a new store in New York City selling L&H instruments at #222 W. 46th St (ad).



1929 Sell Couturier to Holton & end brass production.

Instrument photos from Horn-u-copia.net or auctions.

Lyon & Healy Bell Inscriptions & Models

1. Early RV brass w/shield, 1860s & 70s?
2. 1870s? w/name & scroll below
3. 1870's RV cornets, name w/scroll & PV cornet
4. Henry Gunckel, Paris, c.1880-before 1894
5. F. Jaubert & Co, Paris, c.1880-after 1912
6. Higham, England, before 1894-before 1901
7. Beau Ideal, French, 1894-after 1912
8. Solo Cornet, made ?, 1880s-after 1901
9. Silver Piston, import, c.1895-before 1912
10. Own Make, US, after 1897-?
11. Own Make Duplex Cornet, US, c.1900-?
12. Champion, European, c.1896-before 1912
13. Champion Silver Piston, possibly new in 1912
14. American Professional, US made, before 1912-?
15. American Climax, US made, after 1912
16. Inspiration, after 1912
17. Henri Gautier Virtuoso, Austria (B&F), after 1912
18. LaPorte, Couturier factory, 1924-1929



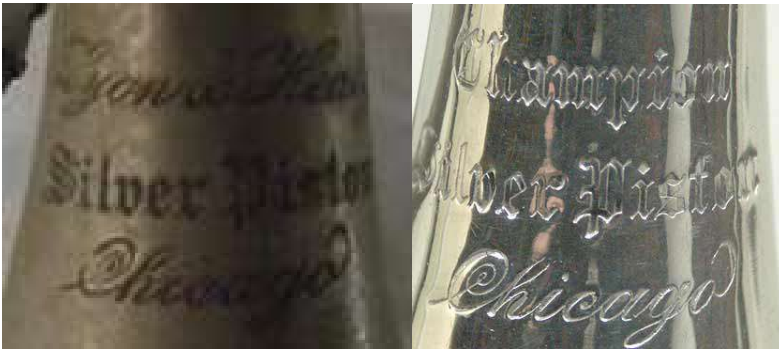
Early and late Beau Ideal markings.

The stamped script "Chicago" with the curl at the end appears on several models starting in the mid-1890s and is shown in their catalogs from 1901 & 1912.

The "Solo Cornet" early & late markings.



Silver Piston & Champion Silver Piston



Later Champion markings



Own Make models use a logo based on Healy's signature. By 1912 they were called "American Make".



Who owned & ran Lyon & Healy?

- 1889 George W. Lyon retires and sells his part of the business and the rights to use his name to PJ Healy (*MTR*, 1916).
- 1905 PJ Healy dies and the presidency is assumed by board member Robert B. Gregory (below), a man who had been involved with the business since 1864 (*MTR*).



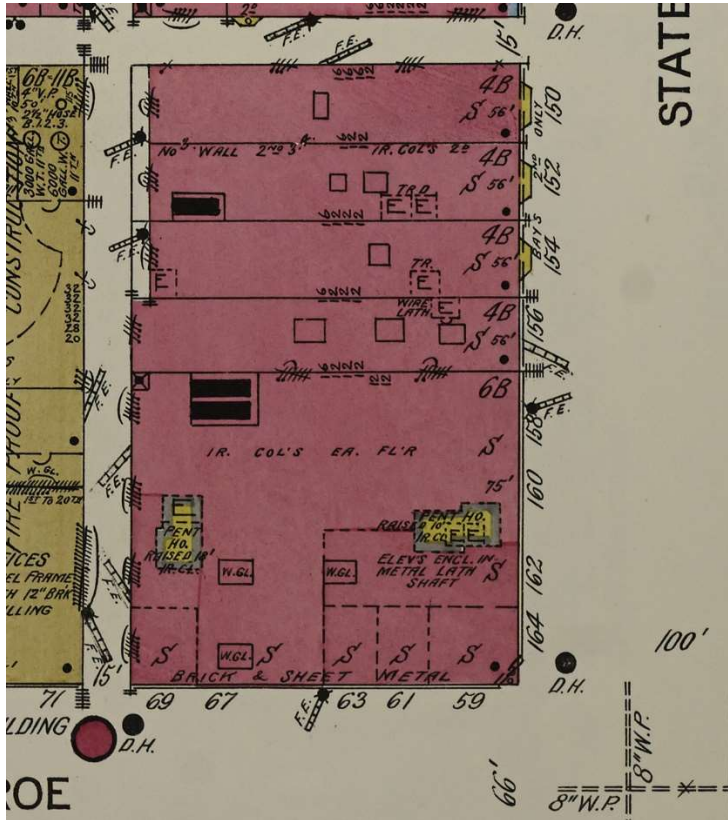
- 1908 Gregory's daughter, Eleanor, marries Raymond E. Durham of New York. They planned to live in Montclair, NJ (*MTR*).
- 1922 Raymond E. Durham, Sr (1877-1939) (photo 1) starts as VP of L&H. He had previously been an executive at starch companies in St Paul and Montclair, NJ, and by 1920 is listed as the president of a tea company in the Chicago area (census & obituary).
- 1925 Durham is now the president of L&H (obit.)
- 1939 Durham is president when he suddenly dies at 62 (obit.)
- 1940 Durham's son Raymond, Jr (1915-1978) is listed in the census as a merchant with a music company, so was likely working for L&H at this time.
- 1953 Robert Gregory "Greg" Durham becomes president of L&H (obit.). He replaces Mark Massell, an interim president since the departure of Louis G. LaMair (*MTR*).
- 1977 Greg Durham retires as president (obit.)
- 1978 Raymond Jr passes away and is listed as a retired VP of Lyon & Healy (obit.)
- 1980s L&H is bought by harp maker Victor Salvi (1920-2015) (photo 2).
- 2015 Marco Salvi (photo 3), eldest son of Victor, becomes president of L&H. This is announced on June 25 by L&H. He replaces Antonio Forero.



Store Locations:

150-164 South State St at corner of Monroe: This was built in 1872 after the great Chicago fire and remained the store until 1894. The building no longer exists.

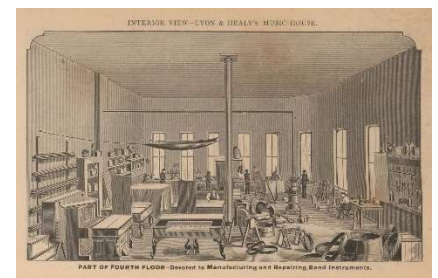
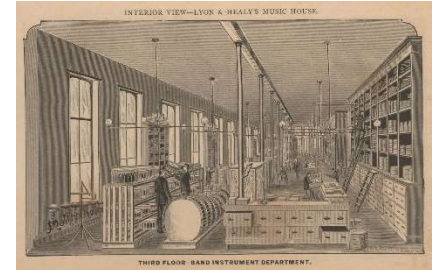
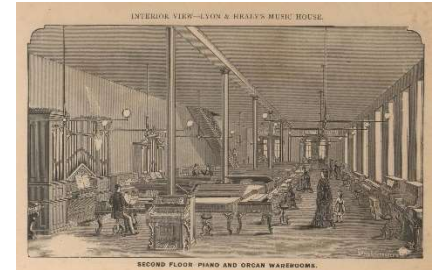
1906 Sanborn map of the building



1878 catalog images at right are the four floors. The first instrument making was on the fourth floor.

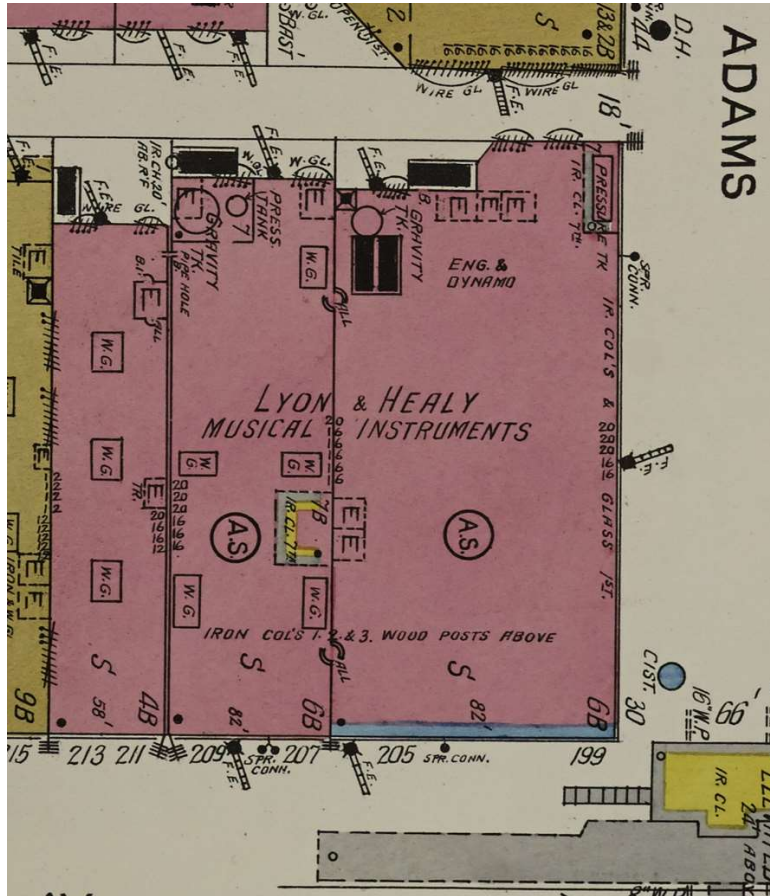
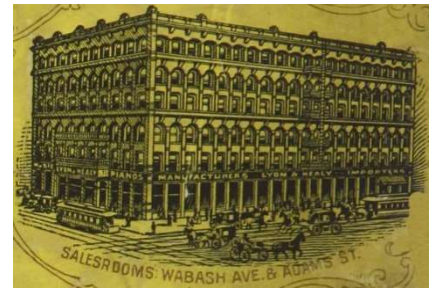
1878: Brass instruments were imported from Europe with the best being made by a French manufacturer.

1880: Brass instruments included those by F. Jaubert & Cie and the higher-priced Henry Gunckel, said to be made in Paris. Neither of these companies really existed so they would have been stencils by a large company like Couesnon.

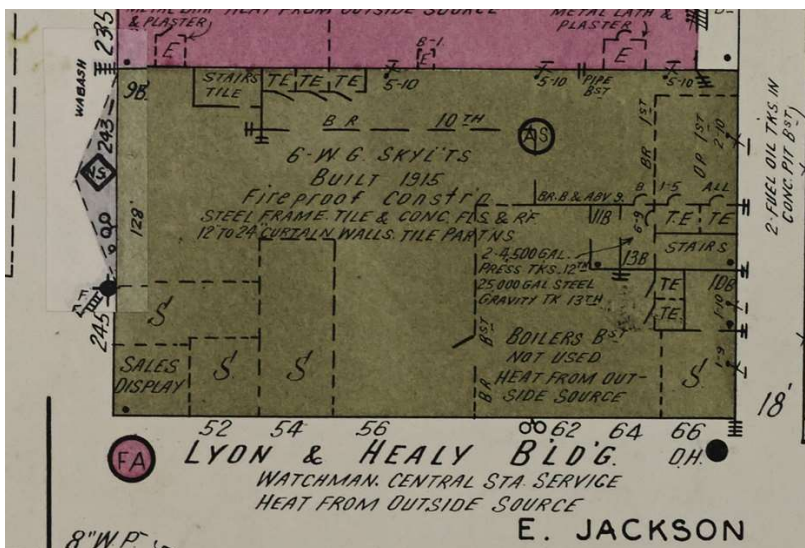


199-213 Wabash Ave at corner of Adams St: This was a new store built in 1894. They remained here until 1916 and in 1940, the corner building was replaced by a parking garage. The left portion in this 1906 Sanborn map below still exists.

The views on the right are from the 1894 and 1901 catalogs.

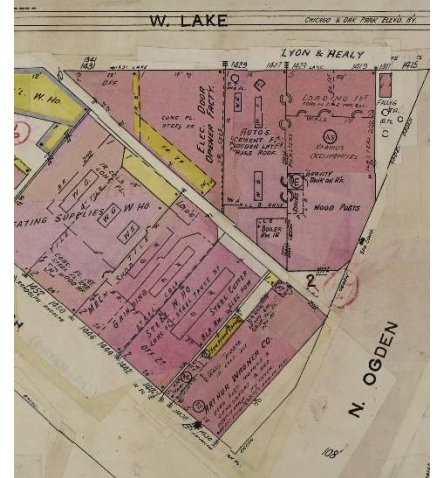
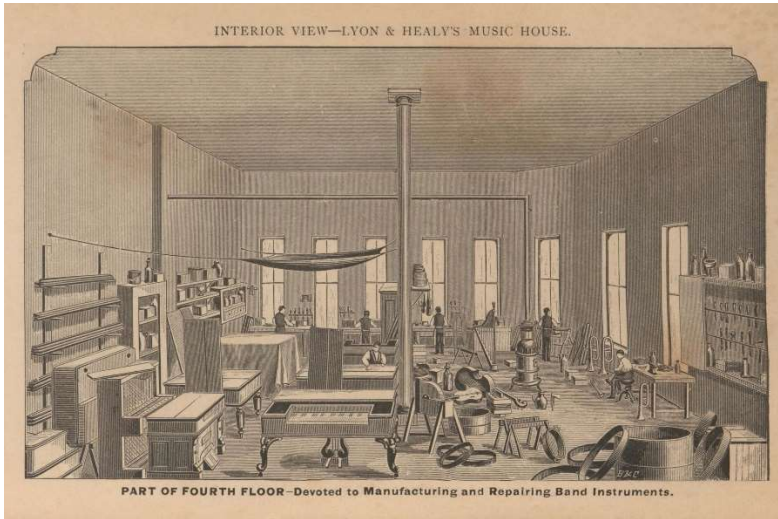


243 South Wabash: They moved here in May of 1916 and were still here by the 1950 Sanborn map below. Today, the building is part of DePaul University (photo 3 at right).



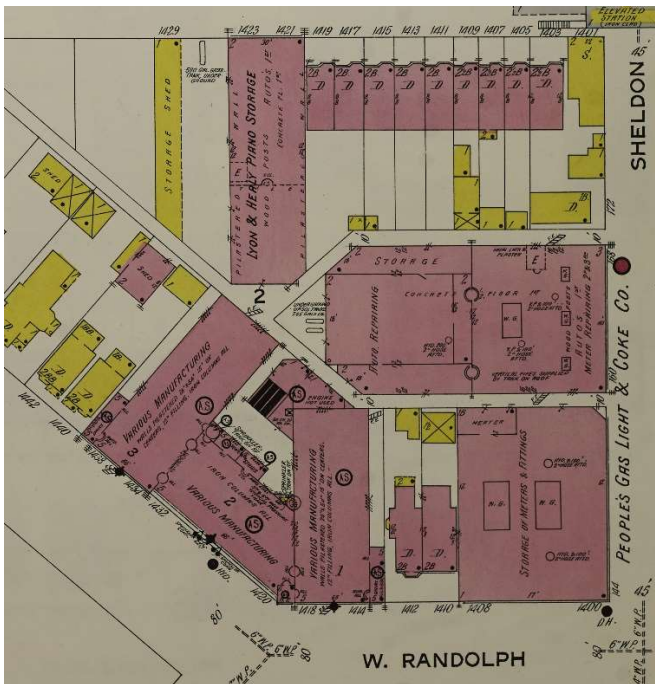
Factory Locations:

1872 – c.1890: The fourth floor of the store.



c.1890 – 1914: #1414-1438 Bryant St (now W. Lake)

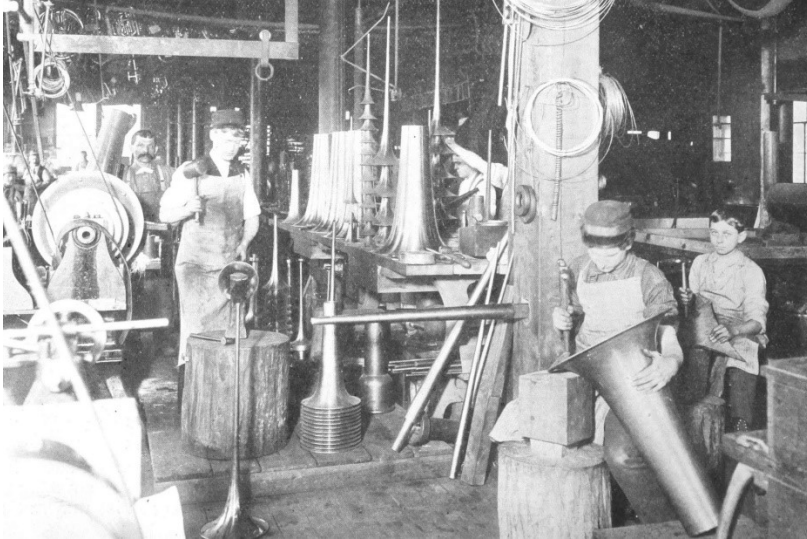
This factory was built c.1890 and used until 1914 (photo 1). The 1916 Sanborn map below shows the building at the bottom center. The top center building on West Lake St is still a L&H warehouse for pianos in 1916.



After this time, most of the buildings here were removed for a change in the streets (photo 2 from 1950). The left portion of the factory still exists at 1434-1438 W. Randolph (photo 3). By 1950, the warehouse on W. Lake St was expanded and is currently the L&H harp factory (photo 4).

1901 Factory Views:

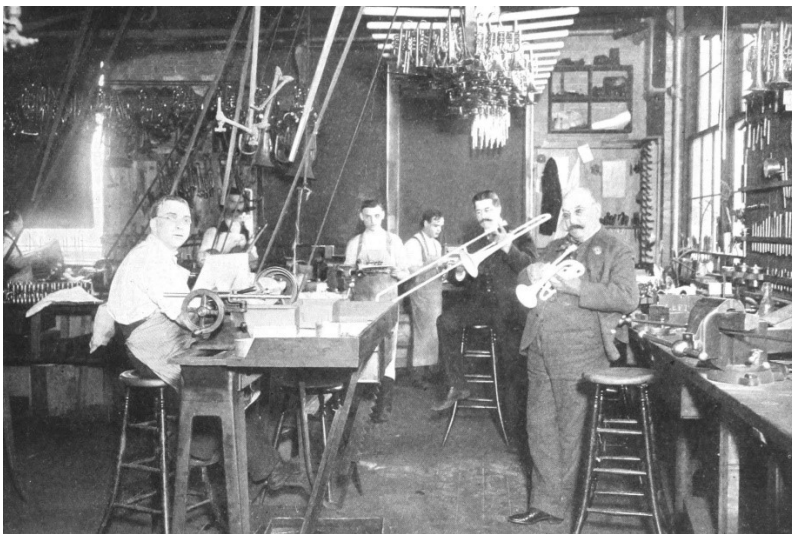
Bell Department



Valve Fitting Department



Assembly & Testing Department



Jules Levy

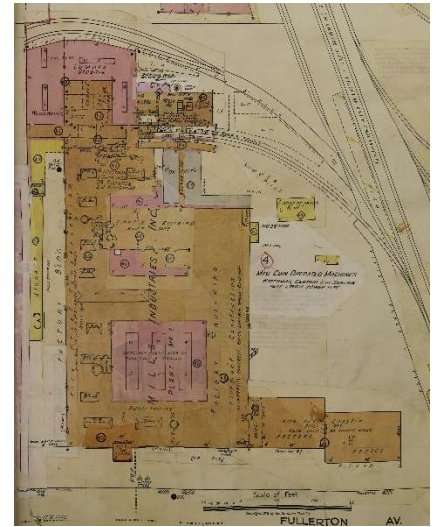
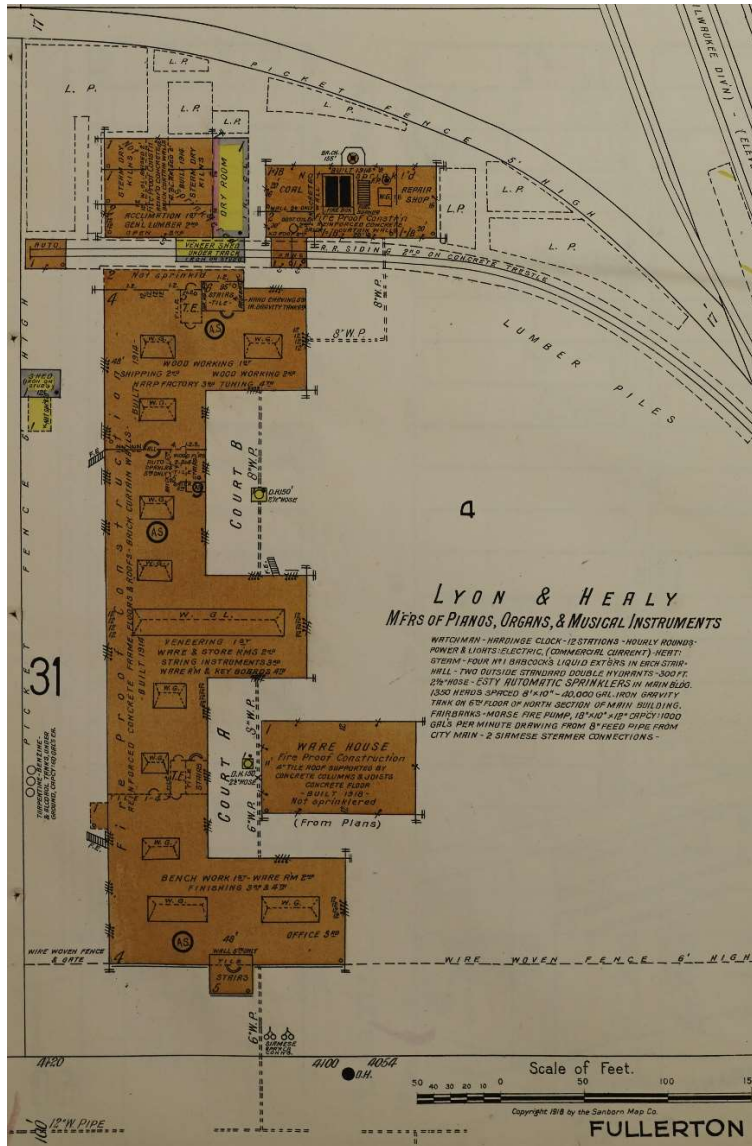


**Mr. King of NH White
fame**

All of the Own Make
brass would have been
made here.

1914 – c.1925: 4100 W. Fullerton

This was a new factory in 1914 further northwest from the old one. With the end of instrument production in 1925, this was likely sold. Below is the 1918 Sanborn map. They made use of the railroad to the east.



The 1950 Sanborn map (top right) shows the building greatly expanded but this may have been done by the Mills Novelty Company who owned it then.

Photo two is of the original factory in 2023, now a U-Haul self-storage facility.